

# Perinatal Network News



LOYOLA  
MEDICINE

July 2025  
Volume 8, Issue 1

**How do I help a pregnant or postpartum patient who is struggling emotionally?**

866-364-MOMS is a free, 24/7 hotline answered live by licensed mental health provider.

## COVID-19 Vaccine in Pregnancy

CDC Data continues to show that COVID-19 during pregnancy increases adverse pregnancy outcomes. Between 2023-2025, infants were the most hospitalized of pediatric patients, with more than 2/3 under 6 months old, emphasizing the importance of maternal vaccination.

ILPQC Doula Certification Funding for Your Hospital! Click for link



**IDPH New Website to Access Administrative codes**

<https://ilga.gov/agencies/JCAR/AdminCode> and select "Title 77: Public Health." The Perinatal Care-specific codes are Parts 250, 640, and 1130.

## Liam's Law

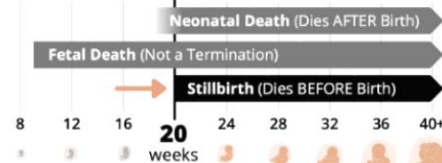
Named after Liam, a term stillborn baby in 2016, this law addresses gaps in communication, record-keeping, and respectful maternity care. Liam's Law updates Illinois' 2003 stillbirth certificate legislation to improve recognition, support, and standards of care for families who experience stillbirth.  
<https://giftsfromliam.org/liams-law/>



Attend a free Lunch-and-Learn July 29, 2025. Scan to register.

### When Does Liam's Law Apply?

In Every Case of Stillbirth



### What Are the Documents?

#### NEW FOR HOSPITALS

#### HOSPITAL RESPONSIBILITY

FILE Fetal Death Certificate + GIVE Liam's Law Notice

#### IDPH RESPONSIBILITY

ISSUE Certificate of Birth Resulting in Stillbirth

#### PATIENT RESPONSIBILITY

SEND Certificate Request Form

## Education Offerings

**eJournal Club-** Maternal Mental Health and Swaddled Bathing and Skin Care July 9-Oct 9

**Summer Bundle-** July 9-Oct 9 complete up to 6 offerings

**S.T.A.B.L.E @ Loyola** July 31

**AWHONN Intermediate Fetal Monitoring @ Resurrection** Aug 5 and Sept 17

**AWHONN OPS: Obstetric Emergencies @ Loyola** Aug 20

**OB and Newborn Education for Emergency Departments @ Loyola** Aug 21

**Coagulation Abnormalities in Pregnancy Virtual** Aug 27

**Maternal Sepsis Virtual** Sept 9

**Maternal Postpartum Nutrition Virtual** Sept 11

**New Website! Scan or use link to register for all programs:**  
[www.loyolamedicine.org/APC](http://www.loyolamedicine.org/APC)

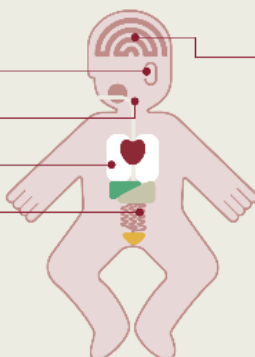


## August is National Breastfeeding Month

### Breastfeeding benefits the baby from top to toe<sup>7</sup>

**NOT breastfeeding is linked to an increased risk of**

- ear infections (otitis media)
- tooth decay & dental malocclusion
- chest infections (lower respiratory infections)
- diarrhoea & vomiting (gastroenteritis)
- death from gut infections in sick and premature babies (necrotising enterocolitis)
- overweight/obesity later in life
- Sudden Infant Death Syndrome (SIDS)



**There is evidence to suggest**

there may be a link between breastfeeding and educational attainment

Breastfeeding supports close and loving relationships which helps the baby's brain development

## September is NB Screening Awareness Month

### 50 YEARS OF NEWBORN SCREENING



*Did you know...*

Children should be **SCREENED SHORTLY AFTER 24 HOURS** of being born.

MOST STATES SCREEN FOR **29** out of **31**

RECOMMENDED HEALTH CONDITIONS

More than **1 IN 300 NEWBORNS** have a condition detectable through Newborn Screening

Most babies with serious but treatable conditions caught by Newborn Screening **GROW UP HEALTHY** with expected development



**2012** the PULSAR EXHAUSTIVE test becomes a part of newborn screening

**1999** HEARING SCREENING is recommended for newborns

**2013** Newborn Screening celebrates its 50th Anniversary

**1963** Newborn Screening begins with a HEEL STICK

Source: Baby's First Test.org